

Hampstead Way

London, NW11



Hampstead Way

A handsome double-fronted Grade II Listed house, built in 1908 and designed by the renowned architects Parker & Unwin. Located in the tranquil and picturesque Litchfield Square, just off Hampstead Way, the property is a short stroll from the many amenities of Temple Fortune and the open green spaces of the Heath Extension.

This elegant home has recently been renovated and offers five bedrooms and two bathrooms (including one en suite), arranged over three floors. The ground floor features a guest WC, a spacious kitchen/breakfast/family room, and a separate reception room. The first floor includes a large principal bedroom with en suite, two further double bedrooms, a family bathroom, and a utility cupboard. The top floor includes bedroom number four and five with the potential to create a further shower room.

Further benefits include a private and beautifully maintained south-east facing garden, a communal garden to the front, allocated off-street parking space. Offered chain-free, viewing of this exceptional home is highly recommended.

Asking Price
£1,695,000







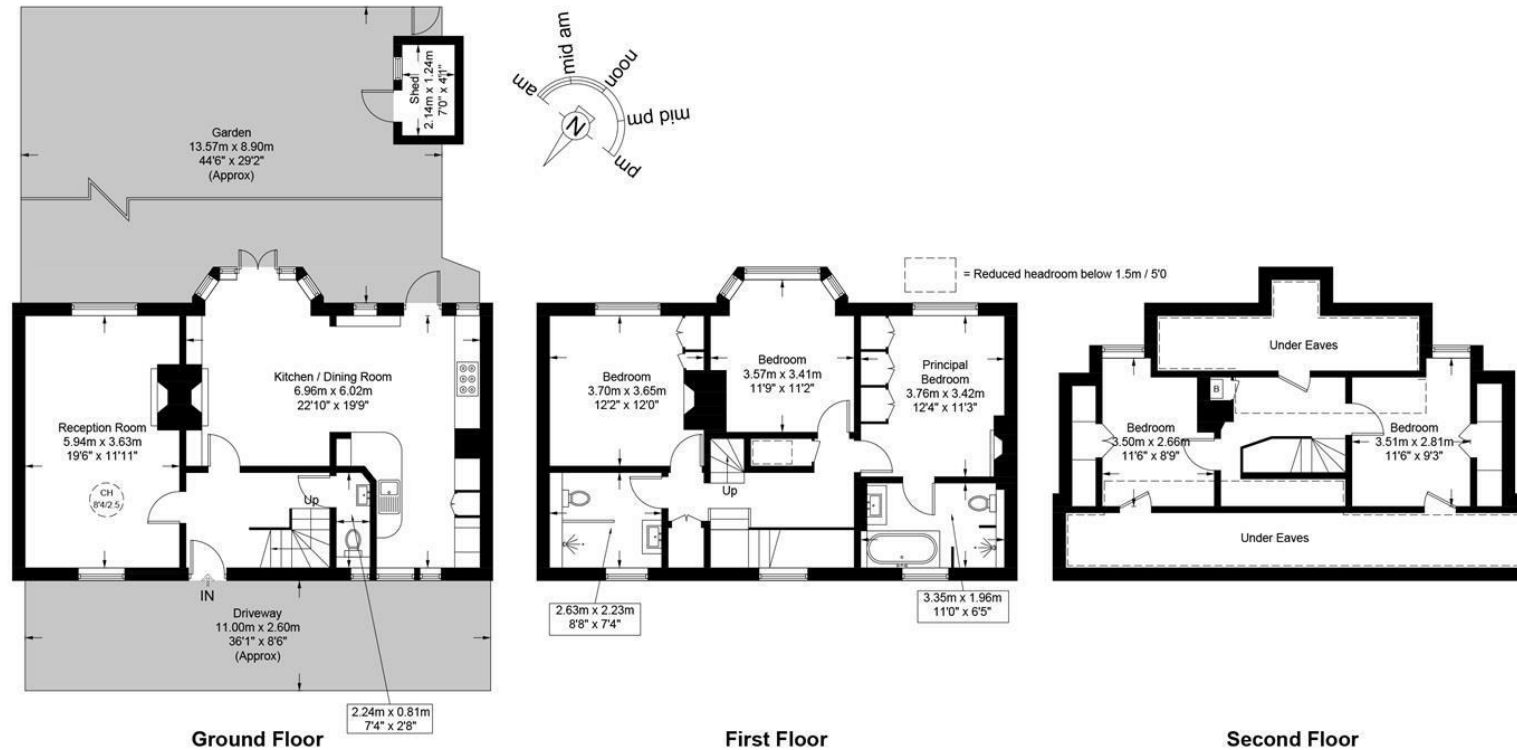


Hampstead Way, NW11

Approximate Gross Internal Area = 2070 sq ft / 192.3 sq m

Restricted Height = 349 sq ft / 32.4 sq m

Shed = 29 sq ft / 2.7 sq m



This plan is for layout guidance only and is not drawn to scale unless stated. All dimensions, including windows, doors, and the Total Gross Internal Area (GIA), are approximate. For precise measurements, please consult a qualified architect or surveyor before making any decisions based on this plan.

